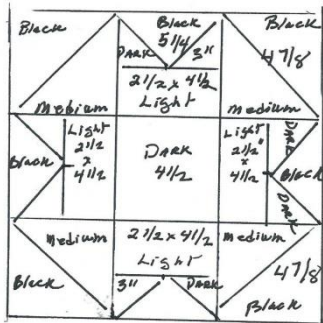


Folded Corner



- April Color Challenge:
- You will need a black as your background and then a Dark, Medium and light in the Wine to Pink Family. Spray all fabric with Perma Press before cutting.
- Cutting Instructions;



-
- Cut out Two Black squares 5" square/layer with two medium 5" squares and sew 1/2 square technique. (1/4" seams on each side of the diagonal line and a cut line down the middle) which will give you 4 half -squares. Re-square at 4 1/2"
- Cut one black square 5 1/4" square and cut the diagonal lines both way. That gives you the outside triangles *which needs to have the grain of the fabric on the outside edge(this is known as a quarter-square)

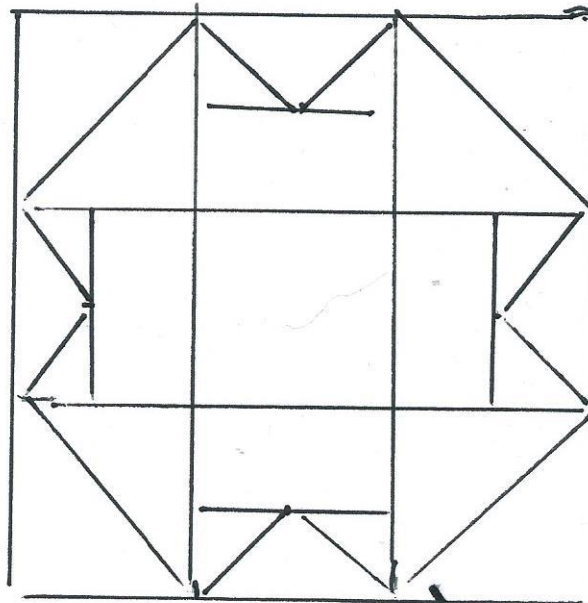
Cut 4 of the light fabric 2 1/2" x 4 1/2" rectangles.

Pg 2 Folded Corner-April Color Challenge:

- Cut four squares of Dark wine fabric 3" square. , Cut in half on the diagonal line to give you 8 triangles * Known as 1/2 squares. Cut out one 4 1/2 square of dark fabric for the center .
- Lay out your pieces according to the visual pattern.

Sewing Instructions:

- Sew the dark wine to the left side of the black triangle with the long edge of the triangle on the outside. Flat press the seam to the side. Matching the outside edge, pin the 1/2" triangle to the right side and sew to that side. Add the light rectangle to the bottom of the sewn triangles. Do all four squares of triangles and rectangles. Flat pressing as your go. Re-squaring at 4 1/2"
- Sew in laid out rows. 1/2 squares triangles to middle with 1/2 square triangle on the end, 2nd row. rectangles to center square on left and right side, repeat the third row like the first row. Sew the three rows together with left and right intersecting matching seams. Re-square your block and flat press. No ironing as that stretches the fabric.



- If you wish you can do your own color mock-up to see if you like your color choices before you sew. I just used scraps but this block does not take much

- @jeanne Harmer 604-795-3266